



WELLGO

[www.wellgo.com.tw](http://www.wellgo.com.tw)

2010

## CLEAT APPLICATION TABLE

	MODEL	RC-3	RC-4	RC-5	RC-6	RC-8	98A	98R	M7A	RF5A	RF5B
ROAD	MG-8					✓	✓	✓			
	MG-9			6"	3"						
	MG-40			6"	3"						
	MG-41					✓	✓	✓			
	MG-43					✓	✓	✓			
	MG-44					✓	✓	✓			
	R096									6"	6"
MTB	WAM-717					✓	✓	✓			
	WPD-823					✓	✓	✓			
	WPD-801					✓	✓	✓			
	WAM-M19					✓	✓	✓			
	WAM-M18					✓	✓	✓			
	W-01					✓	✓	✓			
	M094					✓	✓	✓			
	C099					✓	✓	✓			
DOWNHILL	WAM-D10					✓	✓	✓			
	E003					✓	✓	✓			

## 2009 TABLE OF CONTENTS

- 03 MTB CLIPLESS
- 05 MTB
- 07 ROAD CLIPLESS
- 09 ROAD
- 11 PLATFORM
- 14 TREKKING CLIPLESS
- 15 CITY / COMFORT
- 17 FOLDING / EXERCISER
- 18 TOE CLIPS & STRAPS
- 19 ACCESSORIES







### **M094 MTB**

**BODY:** Aluminum, painted color  
**SPINDLE:** Cr-Mo  
**BEARING:** Ball bearing  
**CLEAT:** 98A or Shimano 51 compatible  
**SIZE:** 80.9 x 65.3 x 33.8 (mm)  
**WEIGHT:** 342 g/pr  
**OPTION:** Sealed bearing version as M094B  
**ORIGIN:** Taiwan



### **W-01 MTB**

**BODY:** Aluminum, painted color  
**SPINDLE:** Cr-Mo CNC machined or Ti  
**BEARING:** DU / Sealed  
**CLEAT:** 98A or Shimano 51 compatible  
**SIZE:** 80.1 x 64.5 x 30.6 (mm)  
**WEIGHT:** 300 g/pr  
**ORIGIN:** Taiwan



### **WAM-M19 MTB**

**BODY:** Aluminum, painted color  
**SPINDLE:** Cr-Mo CNC machined or Ti  
**BEARING:** DU / Sealed  
**CLEAT:** 98A or Shimano 51 compatible  
**SIZE:** 79.8 x 59.8 x 30.1 (mm)  
**WEIGHT:** Cr-Mo 300 g/pr, Ti 252 g/pr  
**ORIGIN:** Taiwan



### **WAM-M717 MTB**

**BODY:** Cr-Mo investment, painted color  
**SPINDLE:** Cr-Mo CNC machined or Ti  
**BEARING:** DU / Sealed  
**CLEAT:** 98A or Shimano 51 compatible  
**SIZE:** 83.6 x 57.8 x 29.3 (mm)  
**WEIGHT:** Cr-Mo 352 g/pr, Ti 298 g/pr  
**ORIGIN:** Taiwan





### WAM-M727 MTB

**BODY:** Aluminum, polished or painted color  
**SPINDLE:** Cr-Mo CNC machined or Ti  
**BEARING:** DU / Sealed  
**CLEAT:** 98A or Shimano 51 compatible  
**SIZE:** 80.4 x 59.2 x 29.7 (mm)  
**WEIGHT:** Cr-Mo 312 g/pr, Ti 266 g/pr  
**ORIGIN:** Taiwan



### WPD-801 MTB

**BODY:** Aluminum, painted color  
**SPINDLE:** Cr-Mo CNC machined or Ti  
**BEARING:** DU / Sealed  
**CLEAT:** 98A or Shimano 51 compatible  
**SIZE:** 82.4 x 66.8 x 32.8 (mm)  
**WEIGHT:** Cr-Mo 366 g/pr, Ti 306 g/pr  
**OPTION:** Magnesium version as MG-18  
**ORIGIN:** Taiwan



### WAM-M18 MTB

**BODY:** Cr-Mo investment, ED black  
**SPINDLE:** Cr-Mo  
**BEARING:** Ball bearing  
**CLEAT:** 98A or Shimano 51 compatible  
**SIZE:** 78.6 x 61.7 x 31.5 (mm)  
**WEIGHT:** 350 g/pr  
**ORIGIN:** Taiwan



### WAM-M919 MTB

**BODY:** Aluminum, ED black or painted color  
**SPINDLE:** Cr-Mo  
**BEARING:** Ball bearing  
**CLEAT:** 98A or Shimano 51 compatible  
**SIZE:** 83.8 x 58.9 x 35.5 (mm)  
**WEIGHT:** 366 g/pr  
**ORIGIN:** Taiwan



### WPD-823 MTB

**BODY:** Aluminum, ED black or painted color  
**SPINDLE:** Cr-Mo  
**BEARING:** Ball bearing  
**CLEAT:** 98A or Shimano 51 compatible  
**SIZE:** 81.4 x 63 x 34.5 (mm)  
**WEIGHT:** 360 g/pr  
**ORIGIN:** Taiwan





### **M079 MTB**

**BODY:** Aluminum 6061 extruded, CNC machined, anodized  
**SPINDLE:** Cr-Mo CNC machined  
**BEARING:** DU / Sealed  
**SIZE:** 100.8 x 60 x 24.4 (mm)  
**WEIGHT:** 238 g/pr  
**ORIGIN:** Taiwan



### **LU-C17 MTB**

**BODY:** Aluminum forged, anodized  
**SPINDLE:** Cr-Mo CNC machined  
**BEARING:** DU / Sealed  
**SIZE:** 100 x 64.7 x 22 (mm)  
**WEIGHT:** 280 g/pr  
**ORIGIN:** Taiwan



### **M-20 MTB / ATB**

**BODY:** Aluminum, barrel silver  
**CAGE:** Aluminum, ED black  
**SPINDLE:** Cr-Mo CNC machined  
**BEARING:** DU / Sealed  
**SIZE:** 101.1 x 63.2 x 24.1 (mm)  
**WEIGHT:** 238 g/pr  
**ORIGIN:** Taiwan



### **M-21 MTB / ATB**

**BODY:** Aluminum, barrel silver  
**CAGE:** Aluminum, ED black  
**SPINDLE:** Cr-Mo  
**SIZE:** 100.7 x 67.7 x 24.7 (mm)  
**WEIGHT:** 236 g/pr  
**ORIGIN:** Taiwan







### **LU-950 MTB**

**BODY:** Aluminum, barrel silver  
**CAGE:** Aluminum, ED black  
**SPINDLE:** Cr-Mo CNC machined  
**BEARING:** DU / Sealed  
**SIZE:** 102.7 x 71.3 x 26.2 (mm)  
**WEIGHT:** 266 g/pr  
**ORIGIN:** Taiwan



### **LU-C276 MTB**

**BODY:** Aluminum, ED black with CNC machined  
**SPINDLE:** Cr-Mo  
**SIZE:** 101.5 x 63.3 x 23.3 (mm)  
**WEIGHT:** 270 g/pr  
**ORIGIN:** Taiwan



### **M085 MTB**

**BODY:** Plastic  
**CAGE:** Aluminum or steel, ED black  
**SPINDLE:** Cr-Mo or Boron  
**SIZE:** 99 x 63 x 24 (mm)  
**WEIGHT:** 216 g/pr  
**ORIGIN:** Taiwan & China



### **M095 MTB**

**BODY:** Plastic  
**SPINDLE:** Cr-Mo or Boron  
**SIZE:** 99 x 79.8 x 24 (mm)  
**WEIGHT:** 238 g/pr  
**ORIGIN:** Taiwan



## CR-1 ROAD

**BODY:** Magnesium, with carbon fiber wrap  
**SPINDLE:** Cr-Mo CNC machined or Ti  
**BEARING:** DU / Sealed  
**CLEAT:** RC-5 / RC-6, LOOK "ARC" cleat compatible  
**SIZE:** 83 x 93.4 x 33.2 (mm)  
**WEIGHT:** Cr-Mo 312 g/pr, Ti 262 g/pr  
**ORIGIN:** Taiwan



## MG-9 ROAD

**BODY:** Magnesium, painted color  
**SPINDLE:** Cr-Mo CNC machined or Ti  
**BEARING:** DU / Sealed  
**CLEAT:** RC-5 / RC-6, LOOK "ARC" cleat compatible  
**SIZE:** 85.2 x 95.8 x 34.2 (mm)  
**WEIGHT:** Cr-Mo 312 g/pr, Ti 262 g/pr  
**ORIGIN:** Taiwan



## R096 ROAD

**BODY:** Aluminum, ED black or painted color  
**SPINDLE:** Cr-Mo  
**BEARING:** Ball bearing  
**CLEAT:** RF5 A / B / C  
**SIZE:** 78. x 90.8 x 33.1 (mm)  
**WEIGHT:** 288 g/pr  
**OPTION:** Sealed bearing version as R096B  
**ORIGIN:** Taiwan



## W-40 ROAD

**BODY:** Aluminum, ED black or painted color  
**SPINDLE:** Cr-Mo  
**BEARING:** Ball bearing  
**CLEAT:** RC-5 / RC-6, LOOK "ARC" cleat compatible  
**SIZE:** 84.1 x 90.8 x 32.9 (mm)  
**WEIGHT:** 296 g/pr  
**ORIGIN:** Taiwan  
**OPTION:** Sealed bearing version as W-40B



## RF5A-CLEAT

Cleat kit for R096  
 9 degree lateral float  
 52 g/pr



## RF5B-CLEAT

Cleat kit for R096  
 6 degree lateral float  
 52 g/pr



## RF5C-CLEAT

Cleat kit for R096  
 0 degree lateral float  
 52 g/pr





### MG-8 ROAD

**BODY:** Magnesium, painted color  
**SPINDLE:** Cr-Mo CNC machined or Ti  
**BEARING:** DU / Sealed  
**CLEAT:** 98A or Shimano 51 compatible  
**SIZE:** 79.8 x 64.8 x 27.8 (mm)  
**WEIGHT:** Cr-Mo 242 g/pr, Ti 200 g/pr  
**ORIGIN:** Taiwan



### W-41 ROAD

**BODY:** Cr-Mo investment, ED black or painted color  
**SPINDLE:** Cr-Mo  
**BEARING:** Ball bearing  
**CLEAT:** 98A or Shimano 51 compatible  
**SIZE:** 78.6 x 54.2 x 24.3 (mm)  
**WEIGHT:** 260 g/pr  
**OPTION:** Sealed bearing version as W-41B  
**ORIGIN:** Taiwan



### W-44 ROAD

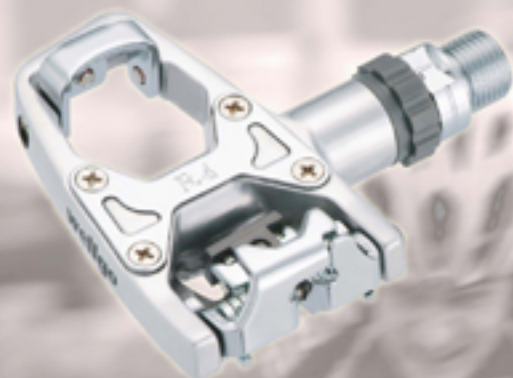
**BODY:** Aluminum, painted color or ED black  
**SPINDLE:** Cr-Mo  
**BEARING:** Ball bearing  
**CLEAT:** 98A or Shimano 51 compatible  
**SIZE:** 82.8 x 76 x 46.8 (mm)  
**WEIGHT:** 314 g/pr  
**OPTION:** Sealed bearing version as W-44B  
**ORIGIN:** Taiwan



### RC-713 ROAD

**BODY:** Aluminum, polished or painted color  
**SPINDLE:** Cr-Mo CNC machined or Ti  
**BEARING:** DU / Sealed  
**CLEAT:** 98A or Shimano 51 compatible  
**SIZE:** 79.8 x 65.3 x 27.9 (mm)  
**WEIGHT:** Cr-Mo 312 g/pr, Ti 252 g/pr  
**ORIGIN:** Taiwan





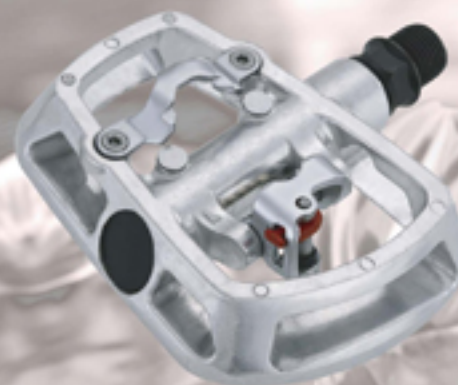
### WPD-R4 ROAD

**BODY:** Aluminum, painted color  
**SPINDLE:** Cr-Mo CNC machined or Ti  
**BEARING:** DU / Sealed  
**CLEAT:** RC-3 / RC-4  
**SIZE:** 80.2 x 77.2 x 29.2 (mm)  
**WEIGHT:** Cr-Mo 312 g/pr, Ti 262 g/pr  
**ORIGIN:** Taiwan



### W43 ROAD

**BODY:** Aluminum, painted color  
**SPINDLE:** Cr-Mo  
**BEARING:** Ball bearing  
**CLEAT:** 98A or Shimano 51 compatible  
**SIZE:** 90 x 100 x 32.5 (mm)  
**WEIGHT:** 396 g/pr  
**ORIGIN:** Taiwan



### WR-1 ROAD

**BODY:** Aluminum 6061 extruded, CNC machined  
**SPINDLE:** Cr-Mo machined  
**BEARING:** DU / Sealed  
**SIZE:** 93 x 61.4 x 22 (mm)  
**WEIGHT:** 224 g/pr  
**ORIGIN:** Taiwan



### R074 ROAD

**BODY:** Aluminum 6061 extruded, CNC machined  
**SPINDLE:** Cr-Mo CNC Machined  
**BEARING:** DU / Sealed  
**SIZE:** 91.5 x 60.5 x 20.2 (mm)  
**WEIGHT:** 226 g/pr  
**ORIGIN:** Taiwan



### LU-C16 ROAD (Toe clip mountable)

**BODY:** Aluminum 6061 extruded, CNC machined  
**SPINDLE:** Cr-Mo machined or Ti  
**BEARING:** DU/Sealed  
**SIZE:** 92.9 x 61.5 x 21.9 (mm)  
**WEIGHT:** Cr-Mo 280 g/pr, Ti 226 g/pr  
**ORIGIN:** Taiwan

**MT-16**

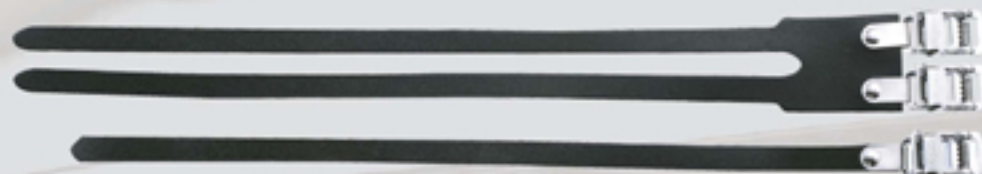
Steel toe-clip with cp finished  
Size: M / L

**R025 TRACK (Toe clip mountable)**

**BODY:** Aluminum, barrel silver  
**CAGE:** Aluminum, ED black  
**SPINDLE:** Cr-Mo  
**BEARING:** Ball bearing  
**SIZE:** 90.1 x 64.8 x 27.7 (mm)  
**WEIGHT:** 238 g/pr  
**OPTION:** Sealed bearing version as R025B  
**ORIGIN:** Taiwan

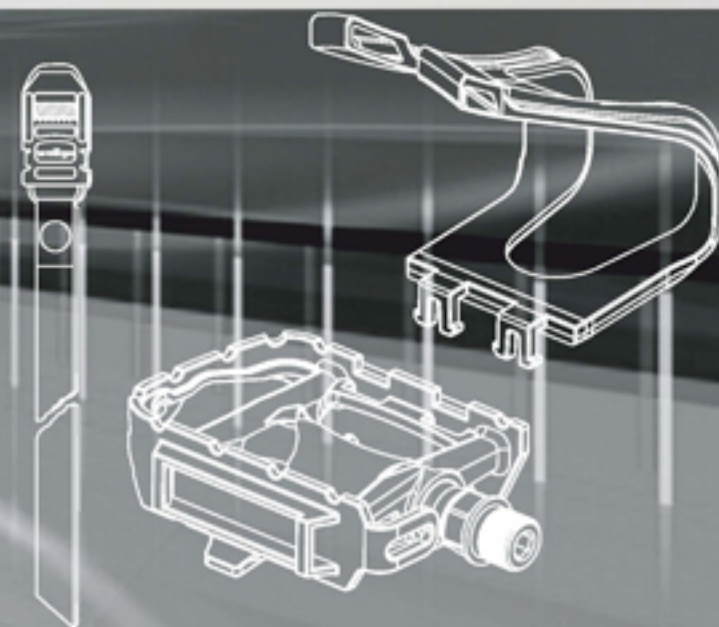
**W5 / W6**

W5 Single leather strap  
W6 Double leather strap

**R090 ROAD**

**BODY:** Plastic with toe-clip & strap  
**SPINDLE:** Cr-Mo or Boron  
**SIZE:** 99 x 79.8 x 24 (mm)  
**WEIGHT:** 238 g/pr  
**ORIGIN:** Taiwan & China

Patent pending







### **W-70 DOWNHILL**

**BODY:** Aluminum with CNC machined  
**SPINDLE:** Cr-Mo CNC machined  
**BEARING:** DU / Sealed  
**CLEAT:** 98A or Shimano 51 compatible  
**SIZE:** 104 x 89 x 30.1 (mm)  
**WEIGHT:** 512 g/pr  
**ORIGIN:** Taiwan



### **WAM-D10 DOWNHILL**

**BODY:** Magnesium, painted color  
**SPINDLE:** Cr-Mo CNC machined  
**BEARING:** Needle / DU / Sealed  
**CLEAT:** 98A or Shimano 51 compatible  
**SIZE:** 109.1 x 94.7 x 33.8 (mm)  
**WEIGHT:** 516 g/pr  
**ORIGIN:** Taiwan



### **B017 BMX**

**BODY:** Aluminum  
**SPINDLE:** Cr-Mo  
**SIZE:** 108 x 102 x 28.8 (mm)  
**WEIGHT:** 510 g/pr  
**ORIGIN:** Taiwan & China



### **MG-52 / LU-A52 BMX / DOWNHILL / FREERIDE**

**BODY:** MG-52 Magnesium, painted color  
 LU-A52 Aluminum, ED black  
**SPINDLE:** Cr-Mo CNC machined  
**BEARING:** DU / Sealed  
**SIZE:** 109.5 x 106 x 28.4 (mm)  
**WEIGHT:** MG-52 426 g/pr  
 LU-A52 540 g/pr  
**PIN:** Replaceable pin  
**ORIGIN:** Taiwan  
**OPTION:** Ball bearing version as LU-A52A





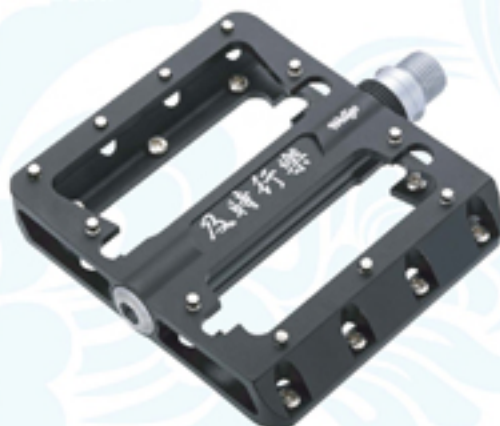
### B030 BMX / DOWNHILL

**BODY:** Aluminum 6061 extruded, CNC machined  
**SPINDLE:** Cr-Mo CNC machined  
**BEARING:** DU / Sealed  
**SIZE:** 109.5 x 100 x 21.9 (mm)  
**WEIGHT:** 390 g/pr  
**PIN:** Replaceable pin  
**ORIGIN:** Taiwan



### B065 BMX / DOWNHILL

**BODY:** Aluminum 6061 extruded, CNC machined  
**SPINDLE:** Cr-Mo CNC machined  
**BEARING:** DU / Sealed  
**SIZE:** 104.5 x 100 x 24 (mm)  
**WEIGHT:** 400 g/pr  
**PIN:** Replaceable pin  
**ORIGIN:** Taiwan



### B060 BMX

**BODY:** Aluminum 6061 extruded, CNC machined  
**SPINDLE:** Cr-Mo CNC machined  
**BEARING:** DU / Sealed  
**SIZE:** 103 x 100 x 23.6 (mm)  
**WEIGHT:** 410 g/pr  
**PIN:** Replaceable Pin  
**ORIGIN:** Taiwan



### B064 BMX

**BODY:** Aluminum 6061 extruded, CNC machined  
**SPINDLE:** Cr-Mo CNC machined  
**BEARING:** DU / Sealed  
**SIZE:** 104.8 x 100 x 23.6 (mm)  
**WEIGHT:** 418 g/pr  
**PIN:** Replaceable Pin  
**ORIGIN:** Taiwan







### **B087 BMX / DOWNHILL**

**BODY:** Aluminum  
**SPINDLE:** Cr-Mo  
**BEARING:** Ball bearing  
**SIZE:** 109 x 100.5 x 26 (mm)  
**WEIGHT:** 442 g/pr  
**PIN:** Mold pin  
**OPTION:** Press-in pin as B087D  
               Replaceable pin as B087U  
               Sealed bearing version as B087B  
**ORIGIN:** Taiwan



### **B102 BMX / DOWNHILL**

**BODY:** Aluminum  
**SPINDLE:** Cr-Mo  
**SIZE:** 113.5 x 102 x 27.6 (mm)  
**WEIGHT:** 432 g/pr  
**ORIGIN:** Taiwan



### **MG-1 BMX**

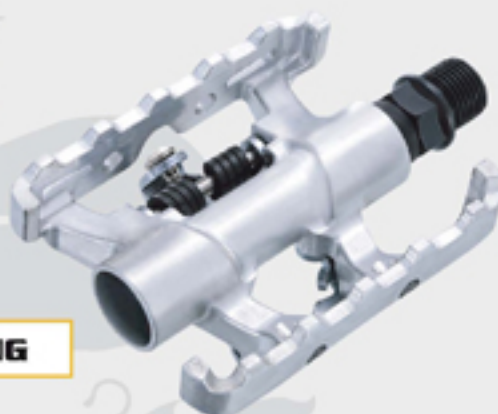
**BODY:** Magnesium, painted color  
**SPINDLE:** Cr-Mo CNC Machined  
**BEARING:** Sealed / DU bushing  
**SIZE:** 114.6 x 106.2 x 30.8 (mm)  
**WEIGHT:** 376 g/pr  
**PIN:** Replaceable pin  
**ORIGIN:** Taiwan



### **B088 BMX**

**BODY:** Plastic  
**SPINDLE:** Cr-Mo or Boron  
**SIZE:** 114 x 102 x 28.4 (mm)  
**WEIGHT:** 308 g/pr  
**ORIGIN:** Taiwan & China





### **C099 CITY / TREKKING**

**BODY:** Aluminum, barrel silver  
**SPINDLE:** Cr-Mo  
**BEARING:** Ball bearing  
**CLEAT:** 98A or Shimano 51 compatible  
**SIZE:** 93 x 66 x 30.1 (mm)  
**WEIGHT:** 350 g/pr  
**OPTION:** Sealed bearing version as C099B  
**ORIGIN:** Taiwan



### **C002 CITY / COMFORT**

**BODY:** Aluminum, barrel silver  
**CAGE:** Aluminum, anodized  
**SPIDLE:** Cr-Mo  
**BEARING:** Ball bearing  
**CLEAT:** 98A or Shimano 51 compatible  
**SIZE:** 101.7 x 65.4 x 29.8 (mm)  
**WEIGHT:** 370 g/pr  
**OPTION:** Sealed bearing version as C002B  
**ORIGIN:** Taiwan



### **WPD-M17C TREKKING**

**BODY:** Aluminum, barrel silver  
**CAGE:** Aluminum, anodized  
**SPINDLE:** Cr-Mo CNC machined  
**BEARING:** DU / Sealed  
**CLEAT:** 98A or Shimano 51 compatible  
**SIZE:** 100.8 x 65.2 x 27.2 (mm)  
**WEIGHT:** 352 g/pr  
**ORIGIN:** Taiwan



### **WPD-95B TREKKING**

**BODY:** Aluminum, barrel silver  
**CAGE:** Aluminum, anodized  
**SPINDLE:** Cr-Mo CNC machined  
**BEARING:** DU / Sealed  
**CLEAT:** 98A or Shimano 51 compatible  
**SIZE:** 105.6 x 71.5 x 34.2 (mm)  
**WEIGHT:** 448 g/pr  
**ORIGIN:** Taiwan





### **C089 CITY / TREKKING**

**BODY:** Aluminum, barrel silver  
**CAGE:** Aluminum, ED black  
**SPINDLE:** Cr-Mo  
**BEARING:** Ball bearing  
**SIZE:** 86.7 x 63.2 x 20 (mm)  
**WEIGHT:** 230 g/pr  
**OPTION:** Sealed bearing version as C089B  
**ORIGIN:** Taiwan



### **C006 CITY**

**BODY:** Aluminum 6061 extruded, CNC machined  
**SPINDLE:** Cr-Mo CNC machined  
**BEARING:** DU / Sealed  
**SIZE:** 95 x 62.7 x 22.9 (mm)  
**WEIGHT:** 208 g/pr  
**ORIGIN:** Taiwan



### **C040 URBAN / TREKKING**

**BODY:** Aluminum 6061 extruded, CNC machined  
**SPINDLE:** Cr-Mo CNC machined  
**BEARING:** Sealed / Sealed / Sealed  
**SIZE:** 90.3 x 90 x 27 (mm)  
**WEIGHT:** 314 g/pr  
**PIN:** Replaceable pin  
**ORIGIN:** Taiwan



### **C091 URBAN / TREKKING**

**BODY:** Aluminum 6061 extruded, CNC machined  
**SPINDLE:** Cr-Mo CNC machined  
**BEARING:** Sealed / Sealed / Sealed  
**SIZE:** 92.6 x 90 x 27.4 (mm)  
**WEIGHT:** 304 g/pr  
**PIN:** Replaceable pin  
**ORIGIN:** Taiwan



### **C-32** CITY / COMFORT

**BODY:** Aluminum barrel silver with kraton top  
**SPINDLE:** Cr-Mo  
**SIZE:** 102.9 x 69.6 x 24.2 (mm)  
**WEIGHT:** 304 g/pr  
**OPTION:** Sealed bearing version as C-32B  
**ORIGIN:** Taiwan



### **C097** CITY / COMFORT

**BODY:** Plastic with kraton top  
**SPINDLE:** Cr-Mo or Boron  
**SIZE:** 101.5 x 72 x 21.6 (mm)  
**WEIGHT:** 254 g/pr  
**ORIGIN:** Taiwan



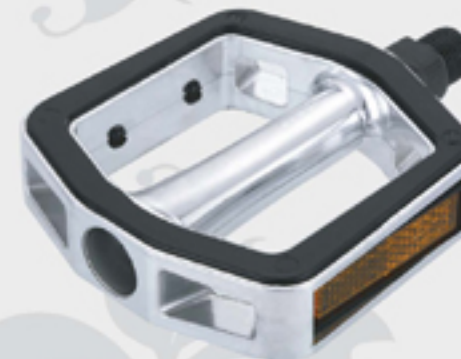
### **C098** CITY / COMFORT

**BODY:** Aluminum body overmolded plastic cage with kraton top  
**SPINDLE:** Cr-Mo or Boron  
**SIZE:** 101.8 x 80 x 22.4 (mm)  
**WEIGHT:** 266 g/pr  
**ORIGIN:** Taiwan



### **C021** CITY / COMFORT

**BODY:** Aluminum body overmolded plastic cage with kraton top  
**SPINDLE:** Cr-Mo  
**SIZE:** 102.2 x 76 x 23.7 (mm)  
**WEIGHT:** 264 g/pr  
**OPTION:** Sealed bearing version as C021B  
**ORIGIN:** Taiwan



### **C016** CITY / COMFORT

**BODY:** Aluminum, barrel silver with kraton top  
**SPINDLE:** Cr-Mo  
**SIZE:** 106 x 91 x 27 (mm)  
**WEIGHT:** 442 g/pr  
**OPTION:** Sealed bearing version as C016B  
**ORIGIN:** Taiwan





### **FP-7 2-WAY FOLDING**

**BODY:** Aluminum, barrel silver  
**CAGE:** Aluminum, ED black  
**SPINDLE:** Cr-Mo  
**SIZE:** 100 x 69.7 x 25.8 (mm)  
**WEIGHT:** 426 g/pr  
**ORIGIN:** Taiwan



### **WPD-E003 EXERCISER (Toe clip mountable)**

**BODY:** Aluminum, ED black  
**SPINDLE:** Cr-Mo CNC machined  
**BEARING:** 3 cartridges  
**CLEAT:** 98A or Shimano 51 compatible  
**SIZE:** 102.4 x 72.4 x 34.9 (mm)  
**WEIGHT:** 646 g/pr  
**OPTION:** W/O QBS or toe clip strap as E003  
 Ball bearing version as WPD-E003  
**ORIGIN:** Taiwan



### **WPD-E14 EXERCISER (Toe clip mountable)**

**BODY:** Aluminum, barrel silver with kraton top  
**SPINDLE:** Cr-Mo  
**BEARING:** Ball bearing  
**CLEAT:** 98A or Shimano 51 compatible  
**SIZE:** 109 x 157 x 34.8 (mm)  
**WEIGHT:** 866 g/pr  
**OPTION:** W/O QBS or toe clip strap as E-14  
 Sealed bearing version as WPD-E14B  
**ORIGIN:** Taiwan





**MT-3**

Double support design with instep guard MT-3 size L, MT-4 size S, MT-5 size M.



**MT-6**

Large supportive design with instep guard.



**MT-10**

Strapless toe-clip for technical or casual riding.



**MT-14**

Double supportive design with built-in reflector. MT-13 size M, MT-14 size L.



**RP-1**

Classic road racing toe-clip. Size:L, M



**MT-11**

Large supportive design with instep guard and built-in reflector.MT-11 size L, MT-12 size M.



**MT-7**

Mini toe-clip  
Size: 82.7 x 53.8 (mm)



**W-2**

Nylon toe-strap



**W-4**

Nylon toe-strap with heavy-duty buckle.



**SC-1**

Foot guard to any strap attachable.



**K001**

Axle replacement kit.



**K004**

Bearing replacement kit.



**K005**

Plate and screw kit  
For W.N.S. clipless pedal





### BOLT TYPE

Bolt-on reflector set  
for standard MTB pedals.  
25 g/pr



### SNAP ON

Snap-on reflector set



### LONG SNAP ON

Extra-long snap-on  
reflector set.



### M7A-R

Reflector for pedals  
using M7 cleat  
55 g/pr



### 98A-R

Reflector for pedals  
using 98A cleat  
60 g/pr



### Allen key pin

(A-pin)  
28-B19 8mm  
28-B7 6mm



### Phillip pin

(U-pin)  
28-11 11mm  
28-12 12mm



### Replaceable pin

(C-pin)  
33-C9 9mm



### Replaceable pin

(R-pin)  
33-R9 9mm



### Replaceable pin

(V-pin)  
33-V9 9mm



### 28-1-WRENCH TOOL 28-2-WRENCH TOOL



### WPD-981-QB5

Quick binding system  
For shimano 51 compatible  
LU-216,981,982,983,998  
4 degree lateral float  
90g/pr



### 98A-CLEAT

Cleat kit with improved  
mud clearance features.  
4 degree float  
73g/pr



### 98R-CLEAT

Cleat kit  
4 degree float  
95 g/pr



### 99A-CLEAT

Cleat kit  
4 degree float  
95 g/pr



### M7A-CLEAT

Cleat kit with improved  
mud clearance features.  
4 degree float  
42 g/pr



### RCB-CLEAT

New cleat design for mountain  
clipless pedal to be assembled  
on LOOK style shoes .  
MATERIAL: Cr-Mo



### RC-3

Cleat kit for WAM-R2  
and R4  
4 degree float  
45 g/pr



### RC-4

Cleat kit for WAM-R2  
and R4.  
4 degree float  
40 g/pr



### RC-5

Cleat kit for WAM-R1,  
R3 and MG-9.  
9 degree lateral float  
54 g/pr



### RC-6

Cleat kit for WAM-R1,  
R3 and MG-9.  
3 degree lateral float  
54 g/pr

# 2009

## WELLGO PEDAL'S CORP

NO.3, Kung 7th Road  
Youth Industrial Park  
43713 Tachia, Taichung Hsien Taiwan R.O.C.  
TEL: 886-4-26816991-5  
FAX: 886-4-2681-6988, 2681-6998  
Http://www.wellgo.com.tw  
E-MAIL: wellgo@ms7.hinet.net  
wd@mail.wellgo.com.tw

## WELLMAG TECHNOLOGY CO., LTD

NO.137, Ching Nine Road  
Youth Industrial Park  
43713 Tachia, Taichung Hsien  
Taiwan R.O.C.  
TEL: 886-4-2682-2398-9  
FAX: 886-4-2682-1909  
Http://www.wellmag.com.tw  
E-MAIL: wellmag1@mail.wellgo.com.tw

## SHANGHAI FACTORY

NO.103 Yueh-Ho South Road  
Economic & Technical Development Zone  
Kunshan, Jiangsu, China  
TEL: 86-512-57701991-4  
FAX: 86-512-57701995  
E-MAIL: wellgo01@pub.sz.jsinfo.net

